

SCENARIO SPECIAL IDEA

Joint Area of Operations	JOA - East (PAMI)
General Idea	OP PACIFIC STORM
Echelon Level	BRIGADE
Unit Type	Olvanan Light Combined Arms Brigade (CA-BDE)
Mission Type	Offensive - Jungle Clearance (Mt Sarawaget, Volcani Tura)

Scenario Design Comments

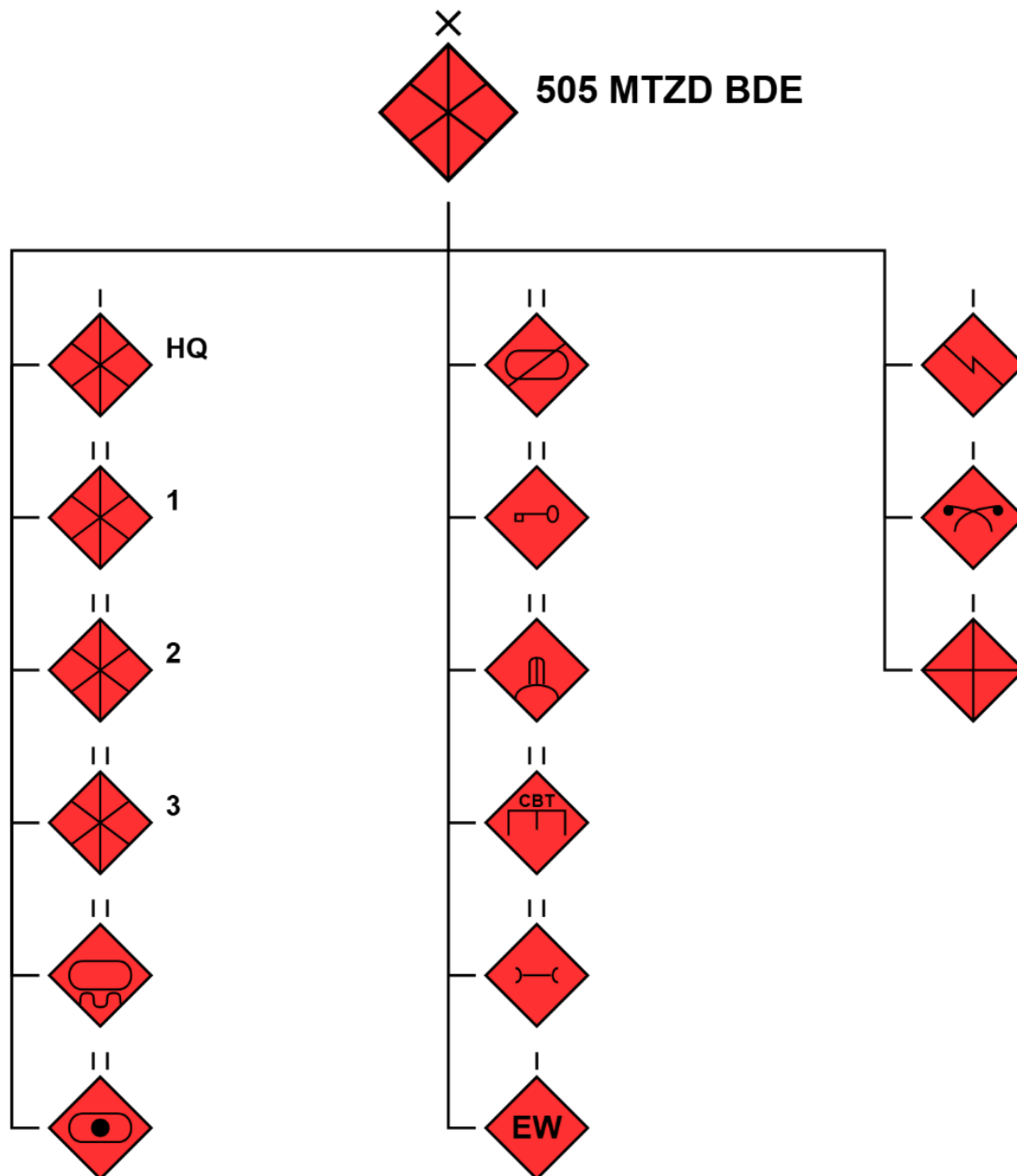
In this scenario, an Olvanan Light CA-BDE conducts a deliberate jungle offensive to clear the Mt Sarawaget massif (Volcani Tura) and secure the ridge-saddle line to reopen northern approaches for theatre manoeuvre.

Tempo is deliberately paced under canopy; the brigade fights with compressed frontages, stacked depth groupings, and heavy use of organic mortars and DS/GS artillery to annihilate in place rather than deep exploitation, consistent with Olvanan jungle doctrine.

- **Purpose of operation:** To seize Key Terrain (KT) and strongpoints astride Mt Sarawaget knuckles/saddles; seize dominant crests; ensure freedom of manoeuvre along Sarawaget–Vunakalui and Sarawaget–Laut corridors.
- **Why Mt Sarawaget:** Key terrain that overwatches northern LOCs; steep jungle and short visibility compress fires/C2, favouring forces trained for canopy operations (Light CAB).
- **Operating method:** Two forward attack groupings, two depth groupings held close, recon fought aggressively for information, engineer-led mobility/counter-mobility, and DS/GS fires massed on TRPs to enable peel-in flanks.
- **Environment:** Jungle ridges/saddles; cloud, rain and canopy degrade ISR and comms; routes are narrow/unstable—CASEVAC and ammo/water pushes require decentralised CSS and porters/UAS resupply.

OPFOR suggested Order of Battle (ORBAT)

The suggested ORBAT for this scenario is a Motorised Brigade (Light Combined Arms Brigade) from the Olvanan Southern Military Theatre (SMT):



The Light CA-BDE is task-organised for operations within the dense jungle terrain within the Area of Operations (AO).

When operating within the jungle, the standard mobility platforms of the manoeuvre elements such as the CSK-141 4x4 Light Tactical Vehicle are substituted for more suitable and highly manoeuvrable vehicles such as the CS/VP4 8x8 All-Terrain Vehicle (ATV).

It is not uncommon for the Light CA-BDE to operate within a dismounted light infantry capacity, depending on the terrain.

OPFOR Mission

SITUATION

Due to a suspected GREENFOR presence concealed within the dense vegetation within MT SARAWAGET, the Light CA-BDE has been tasked to conduct an offensive operation to clear the Key Terrain (KT) IOT ensure freedom of manoeuvre for Olvanan forces within the AO. If any enemy presence is detected, the CA-BDE is to DESTROY the opposing force.

MISSION

505 MTZD BDE is to clear Mt Sarawaget, seize dominant crests and saddles, IOT maintain freedom of manoeuvre along the Sarawaget littoral approaches, enabling follow-on theatre operations.

Phase 1 – Reconnaissance & Shaping

- Recon BN layers patrols, OPs and UAS/SIGINT to build the picture (expect slower returns and deliberate synchronisation under canopy). Recon is combined-arms with EW and radars, backed by engineer recon.
- Artillery registers TRPs and alternate firing positions to sustain continuity of fires (PCL-09 122 mm howitzers in DS; PHL-90B MRL in GS). Wireless data and displacement drills support “shoot-and-scoot”.

Phase 2 – Advance to contact

- Two frontline attack groupings advance to contact on compressed frontage; two depth groupings held closer than in Motorised operations to exploit flank opportunities rapidly without a heavy thrust element.
- Recon fights for information; screens push to the flanks; engineers push breaching and mobility teams forward.

Phase 3 – Unfold

- If enemy presence is detected and contact occurs, the Light CA-BDE will fix on one axis and conduct a limited attack on the other.
- The commander will define main effort as the picture clarifies; firepower grouping engages depth and C2. Expect higher C2 burden to reposition depth groupings under canopy.

Phase 4 – Initiate

- Massed indirect Assault By Fire (ABF) on enemy C2 nodes.
- Reserves and counter-attack units designated by commander.

- Commander will commit both depth groups to the chosen flank, while acknowledging frictions in fires massing (as some mortars ride with depth groups).

Phase 5 – Annihilate

- Depth groups peel around to strike flanks/rear rather than deep exploitation, coordinated with firepower group to kill in position.
- Commander will accept higher fratricide risk – mitigated by TRPs/FRAGOs and restrictive fire lines.

Phase 6 – Continuing

- If enemy conducts a withdrawal from contact, no rapid pursuit is initiated.
- Recon elements will maintain contact in the depth zone, while the brigade consolidates resupplies, conducts POL/water pushes, and resets CASEVAC—expect deliberate passage of lines and perimeter posture before resuming.

End-State.

Brigade controls the Mt Sarawaget ridge-and-saddle line; MSR corridors opened; CAB reorganised to continue the jungle campaign.

OFFICIAL / UNCLASSIFIED

KEY TERRAIN

MT SARAWAGET, VOLCANI TURA

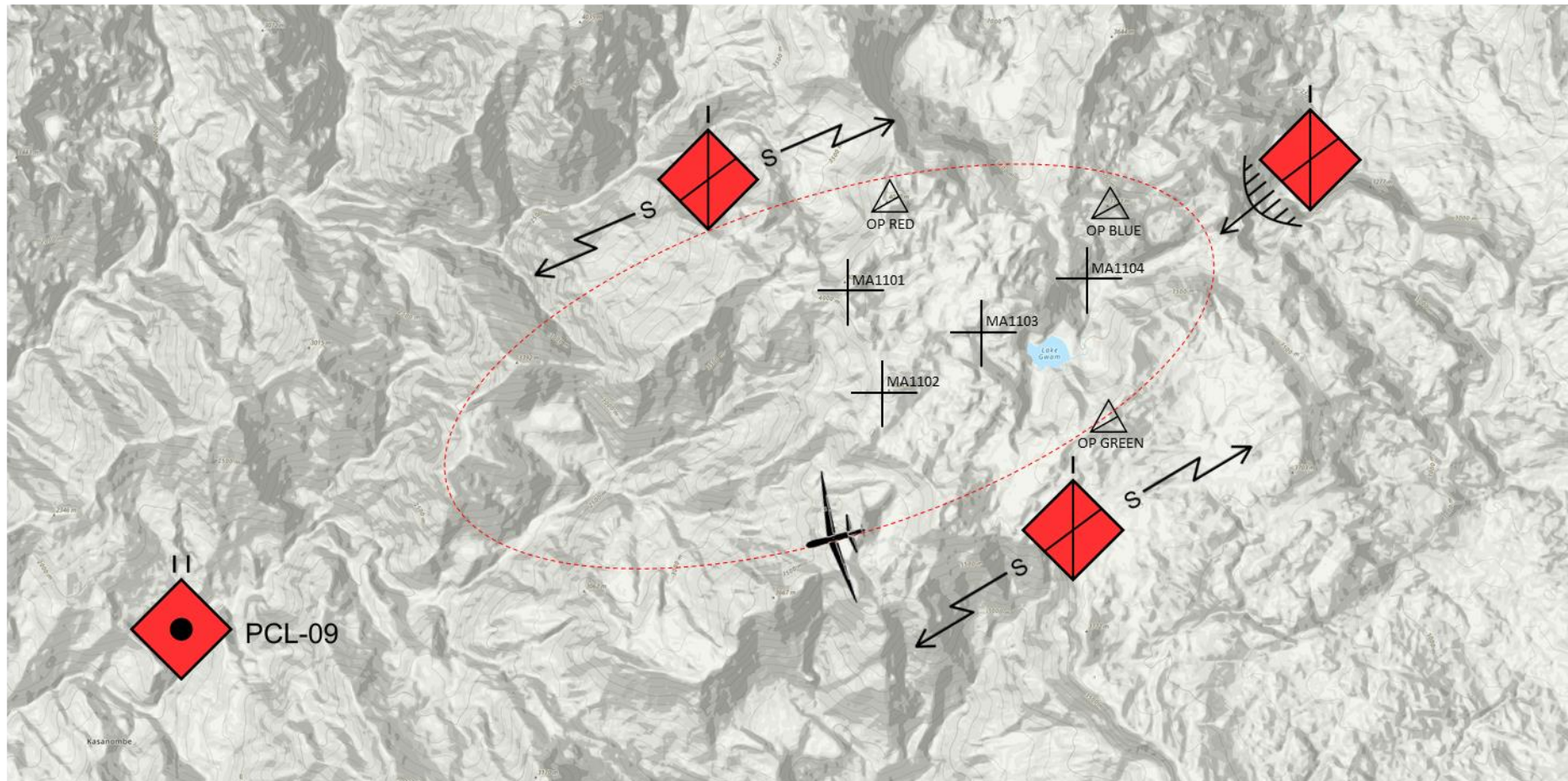


OFFICIAL / UNCLASSIFIED

OFFICIAL / UNCLASSIFIED

OLVANA SCHEME OF MANOEUVRE

PHASE 1 – RECON AND SHAPING



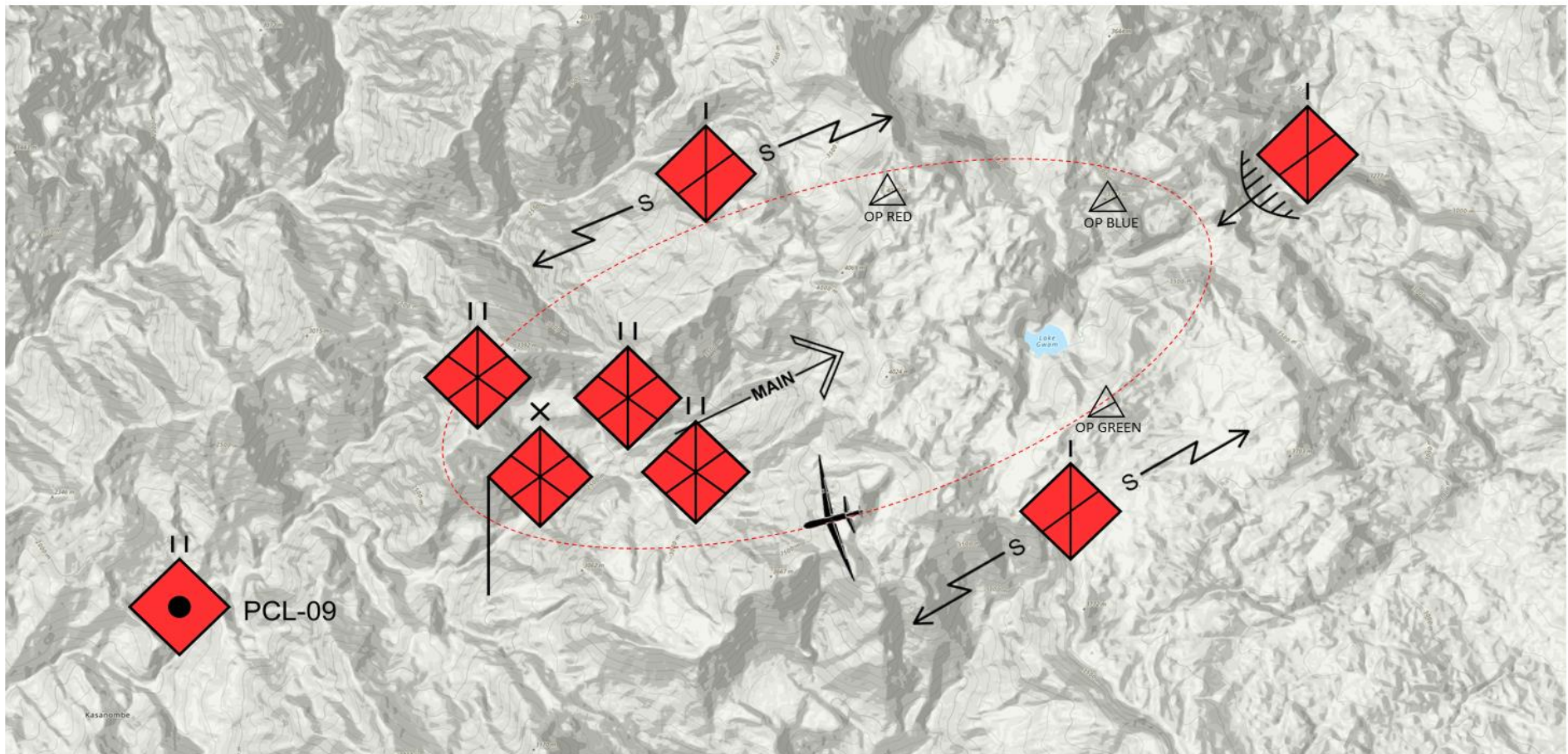
Recon Bn layers patrols, OPs and UAS/SIGINT to build SA.

Artillery registers TRPs and alternate firing positions to sustain continuity of fires (PCL-09 122 mm howitzers in DS; PHL-90B MRL in GS).

OFFICIAL / UNCLASSIFIED

OLVANA SCHEME OF MANOEUVRE

PHASE 2 – ADVANCE TO CONTACT

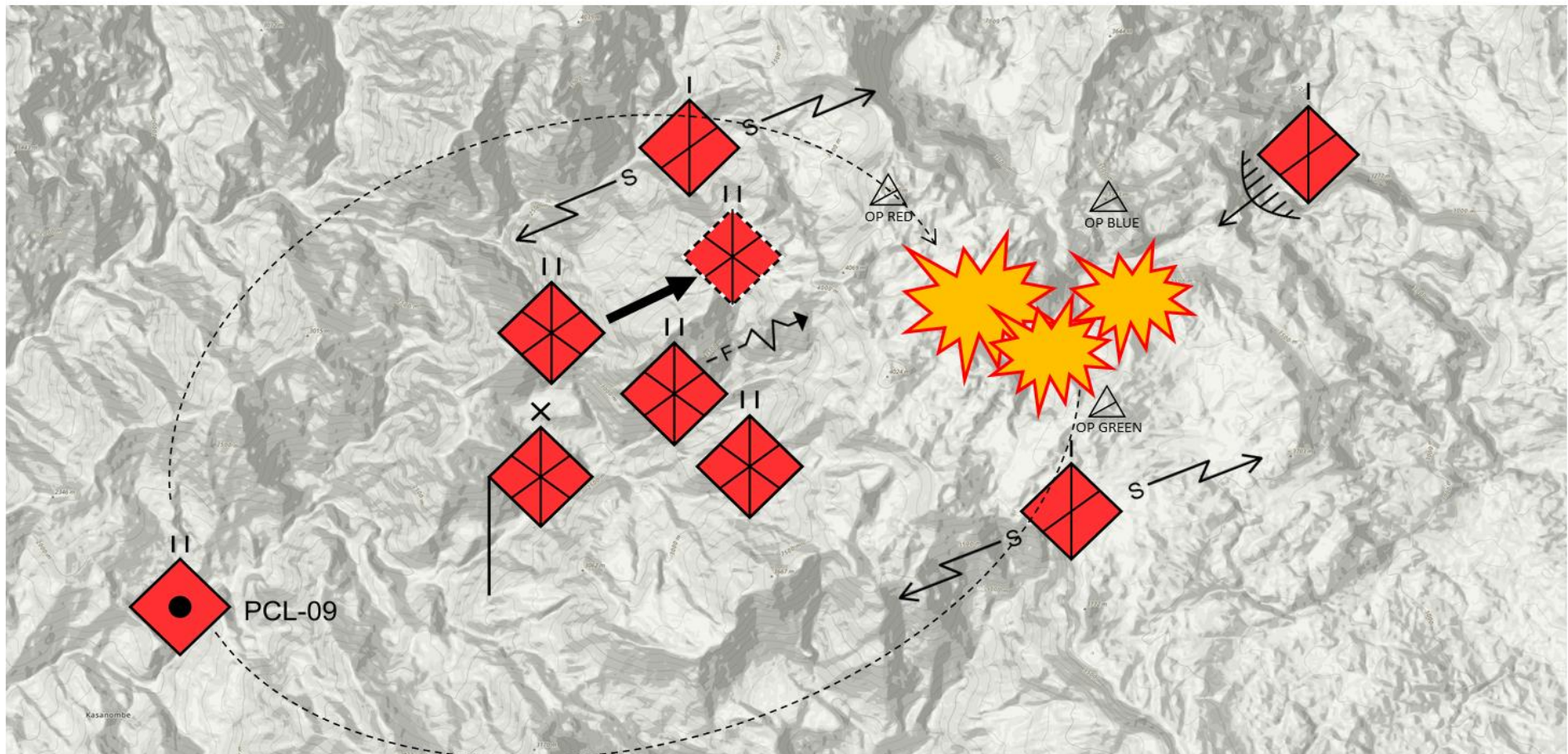


Two frontline attack groupings advance on compressed frontage.

Recon fights for information; screens push to the flanks.

OLVANA SCHEME OF MANOEUVRE

PHASE 4 – INITIATE

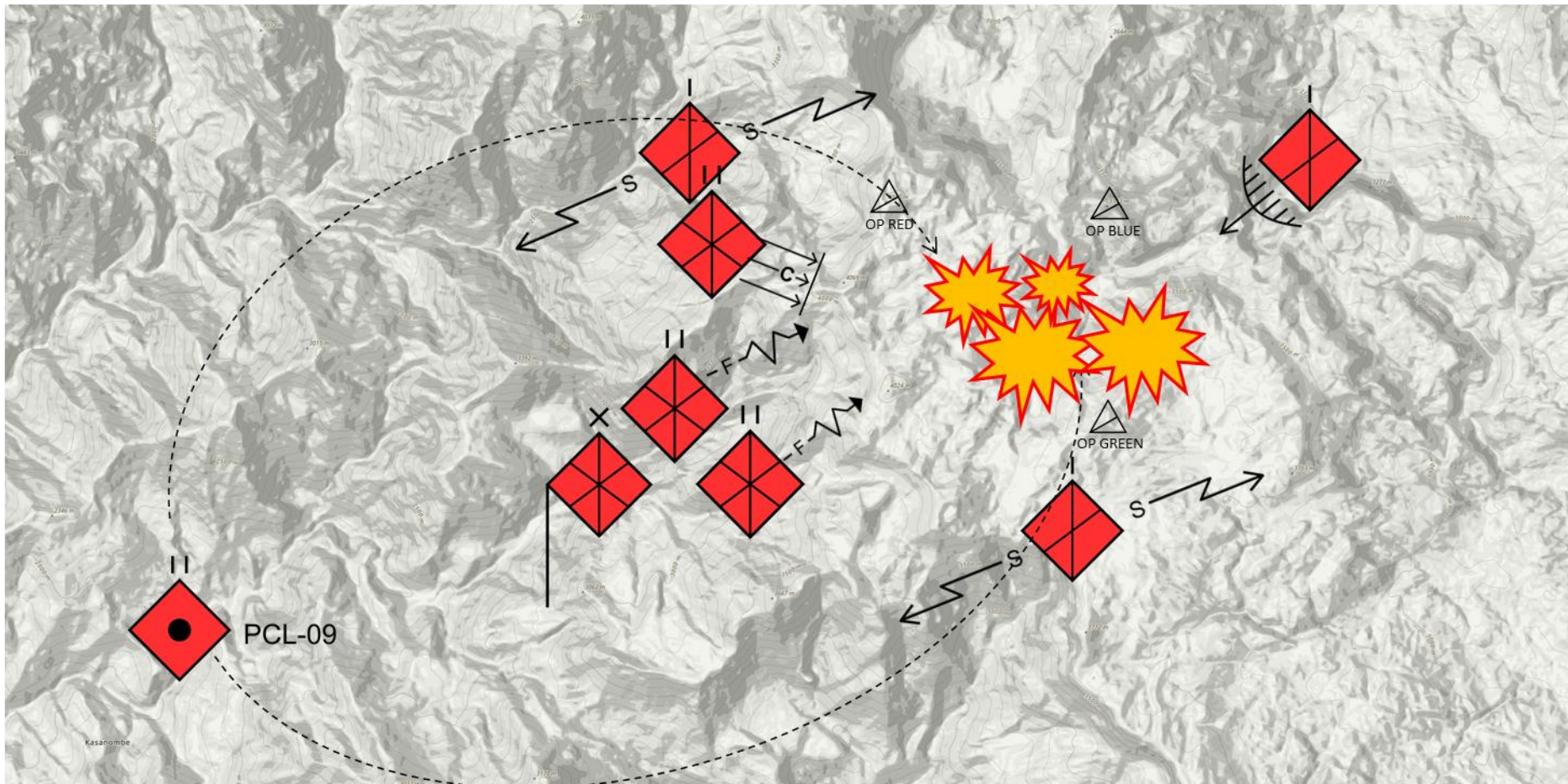


Massed assault by fire on C2, reserves and counter-attack bases; commit depth group to the chosen flank.

OFFICIAL / UNCLASSIFIED

OLVANA SCHEME OF MANOEUVRE

PHASE 5 – ANNIHILATE

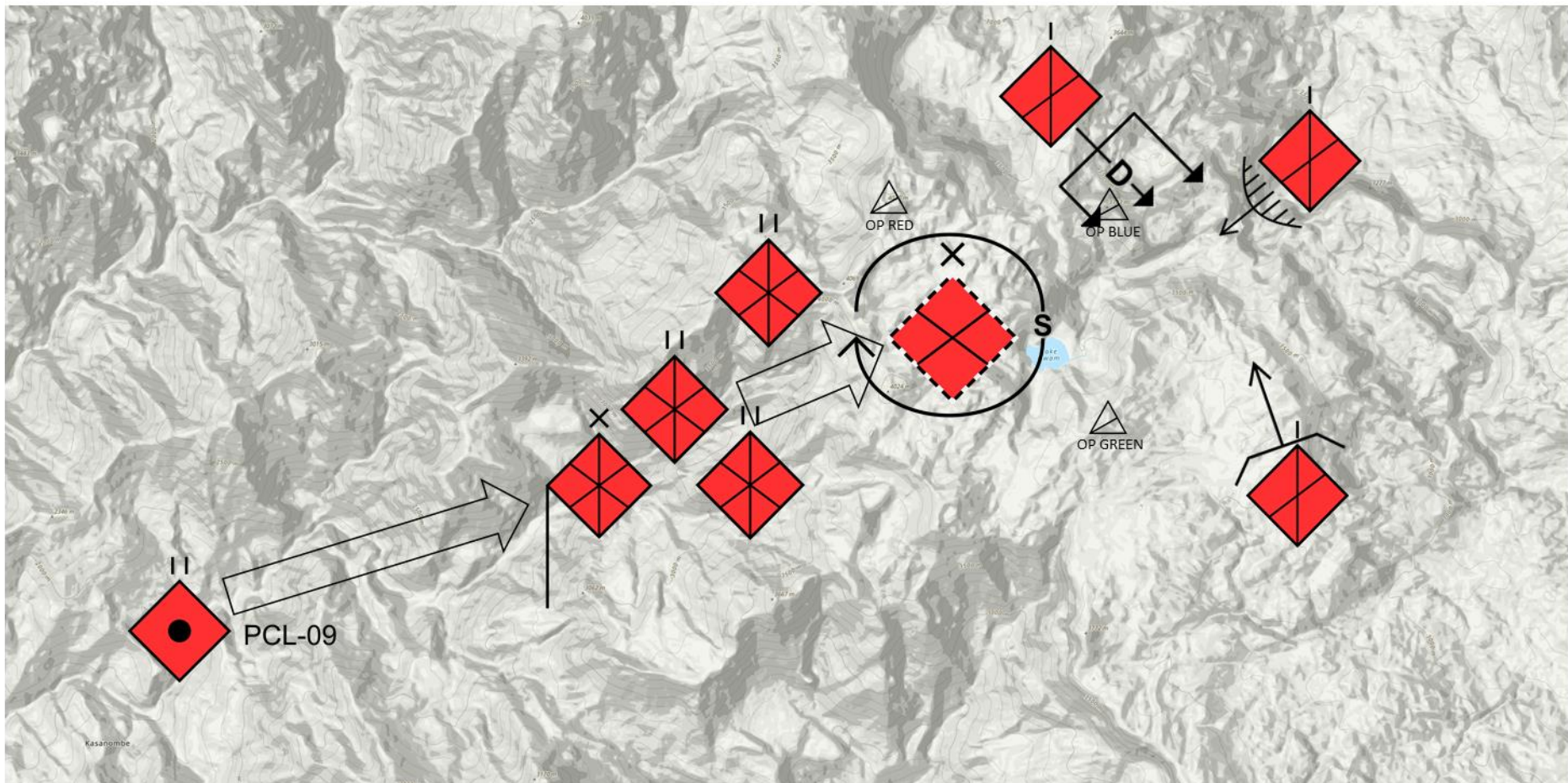


Depth group peels around to strike flanks/rear rather than deep exploitation, coordinated with firepower group to kill in position.

OFFICIAL / UNCLASSIFIED

OLVANA SCHEME OF MANOUEVRE

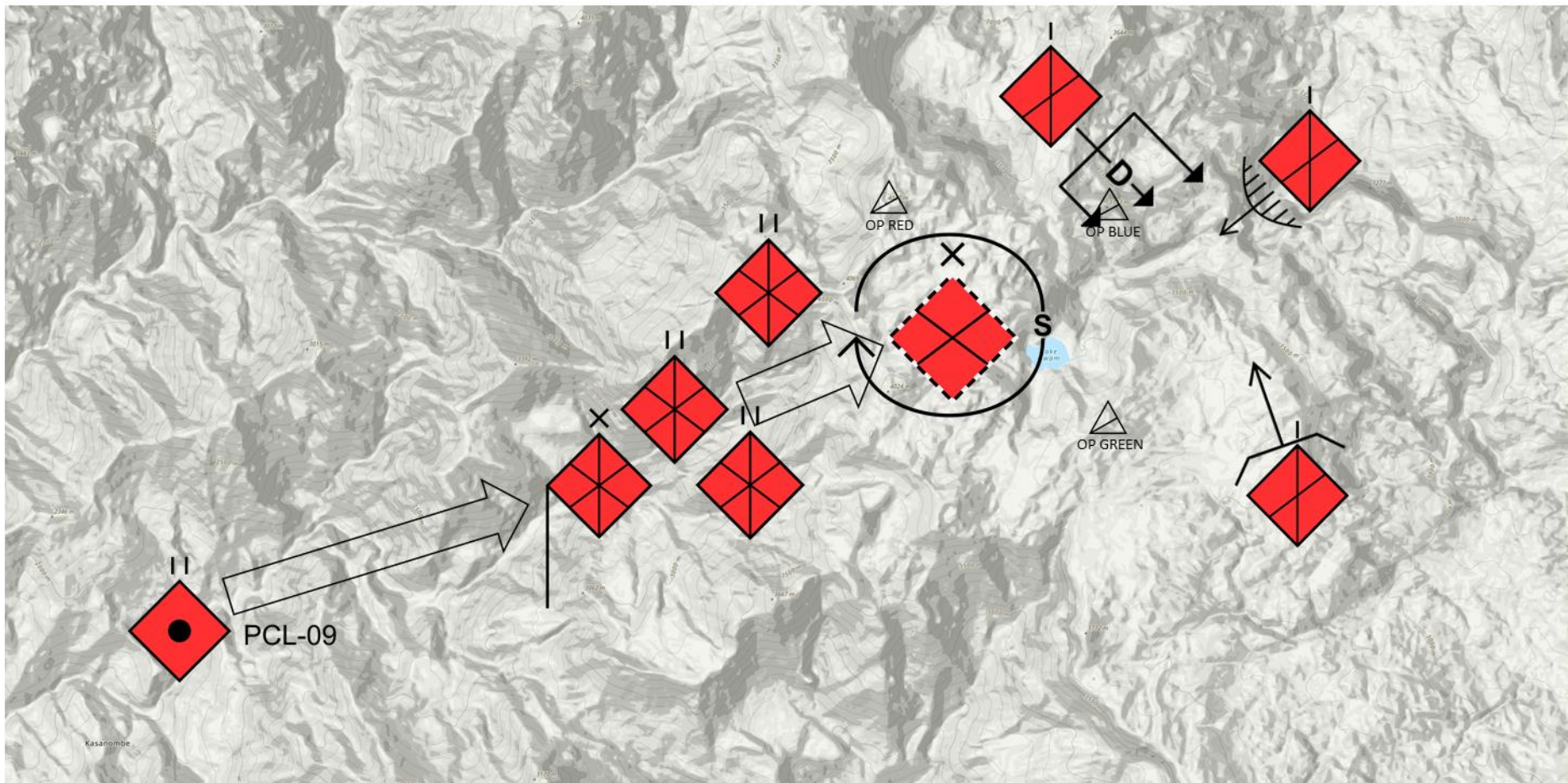
PHASE 6 – CONTINUING



No rapid pursuit; recon maintains contact in depth, while the brigade consolidates, resupplies, conducts POL/water pushes, and resets CASEVAC.

OLVANA SCHEME OF MANOUEVRE

PHASE 6 – CONTINUING



No rapid pursuit; recon maintains contact in depth, while the brigade consolidates, resupplies, conducts POL/water pushes, and resets CASEVAC.

Relevant Training References

Olvanan Brigade level Tactics

[Olvanan Mechanised Brigade Task Group Tactics | Decisive Action Training Environment \(DATE\)](#)

Olvanan Jungle Warfare Tactics

[Olvanan Jungle Warfare Tactics at Combined Arms Brigade and Below | Decisive Action Training Environment \(DATE\)](#)

Further training resources are available on the Australian DATE website, accessed at date.army.gov.au

Detailed adversary information, including ORBATs, is available via United States Training and Transformation Command (T2 COM) at <https://odin.tradoc.army.mil/>