

SCENARIO SPECIAL IDEA

Joint Area of Operations	JOA - East (PAMI)
General Idea	OPERATION PACIFIC STORM
Echelon Level	BATTALION
Unit Type	MECHANISED INFANTRY
Mission Type	OFFENSIVE - CLEARANCE

Scenario Design Comments

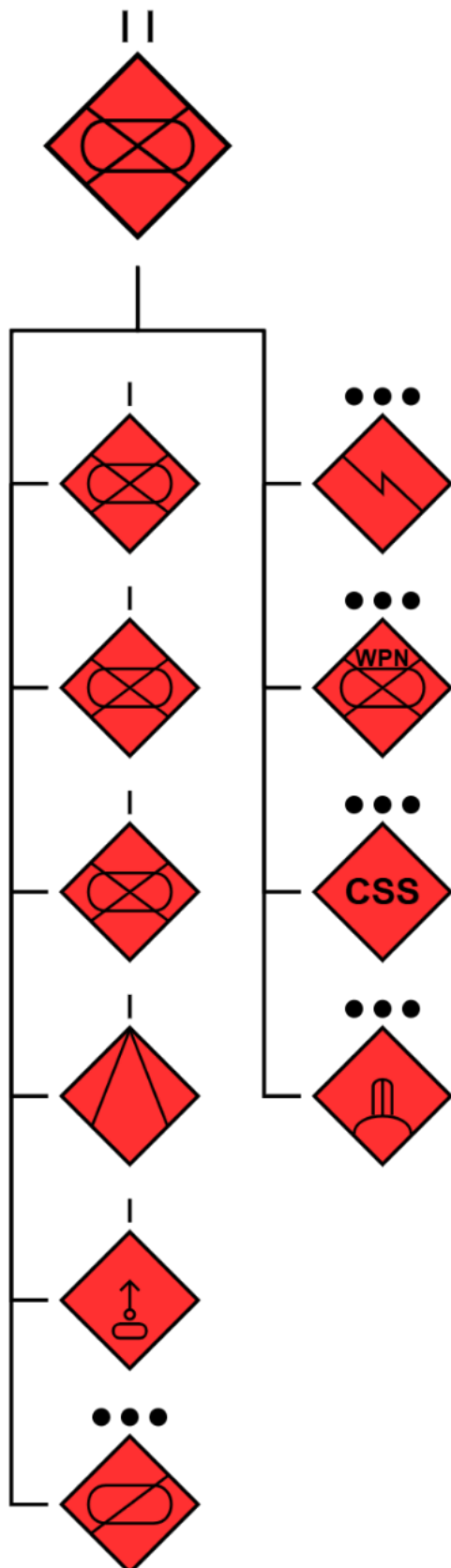
In this scenario, an Olvanan Mechanised Battalion (MECH BN) is tasked with the clearance of the PANGUNA MINE complex, a resource rich facility on PELABUKA ISLAND, within the broader PULLER ISLANDS archipelago.

Following the Olvanan People's Army (OPA) Mechanised Brigade (MECH BDE)'s successful amphibious lodgement IVO KIETA PORT, on the Eastern coast of PELABUKA ISLAND, the MECH BDE has conducted a route clearance operation, advancing along the MSR to the South and capturing Key Terrain (KT) along the route.

The control of this KT will enable the OPA's wider military objectives within the theatre, primarily within VOLCANI TURA (VT) and the PULLER ISLANDS (PI).

OPFOR suggested Order of Battle (ORBAT)

The suggested ORBAT for this scenario is an Olvanan Mechanised Battalion (MECH BN):



The MECH BN consists of:

1. Battalion Headquarters
2. Mechanised Infantry Companies (x3)
3. Anti-Tank Company
4. Self-propelled Mortar Company
5. Reconnaissance Platoon
6. Signals Platoon
7. Weapons Platoon
8. Combat Service Support (CSS) Platoon
9. Air Defence Platoon

The MECH BN is capable of conducting high-intensity offensive and defensive tactical actions, relatively independent of the MECH BDE.

The primary manoeuvre and firepower platform is the ZBL-08, an 8x8 Amphibious Infantry Fighting Vehicle (AIFV), capable of transporting between 7-11 dismounts depending on the configuration.

OPFOR Mission

SITUATION

The OPA 502 Mech Bde has landed at the SPOD in KIETA PORT on PELABUKA ISLAND. Their mission is to secure PELABUKA ISLAND and the resource rich PANGUNA MINE complex.

The 502 Bde HQ is currently located at KIETA Port as their primary SPOD, with BDETs tasked to secure key terrain around KIETA, including the town of ARAWA.

MISSION

2 MECH BN is to conduct a Clearance of the PANGUNA MINE IOT secure the KT, and support the OPA advance in the AO.

Phase 1 – Recon and Shaping

- An initial recon sweep of the PANGUNA MINE complex will be conducted by organic UAS elements pre-H IOT identify any GREEN or CIV presence in and around the objective area.
- MECH RECON PLATOON will traverse around the Western perimeter of the mine complex, utilising terrain shielding, IOT establish an overwatch position and block any likely avenues of approach or exfiltration routes to the South.
- 1, 2 and 3 MECH COMPANY will be co-located with MECH BN HQ in FUP to the North East of the Mine.
- 2 and 3 MECH COMPANY will shake out into Assault formation, while 1 MECH COMPANY will establish all-round defence of BN HQ in FUP location.
- MORTAR COY will establish fire positions able to support the manoeuvre elements advance.

Phase 2 – Northern village clearance

- UAS to maintain persistent ISR soak over OBJ area. Provide target indications and battlefield commentary to BATTALION HQ.
- MECH RECON PL to provide overwatch of OBJ area, and cut-off any potential withdrawal or EN C-ATK from the South.
- 3 MECH COMPANY is to clear the Northern PANGUNA VILLAGE, and then reposition for a feint attack on the central administration area of the mine from the North.
- MORTAR COY will BPT conduct indirect offensive fires on order, ISO manoeuvre forces.

Phase 3 – Central Assault

- 3 MECH COMPANY will execute the feint attack on the central administration area of the mine from the North.

- 2 MECH COMPANY will simultaneously advance to contact, in synch with 3 MECH COMPANY's feint to the North, and clear the central PANGUNA MINE Administration complex.
- 1 MECH COMPANY will continue to provide area defence for BN HQ, and BPT act as a Quick Reaction Force (QRF) or exploit breakthroughs through the central administration area.
- MORTAR COY BPT provide offensive fire support during the advance on order.

Phase 4 – Seizure of PANGUNA MINE

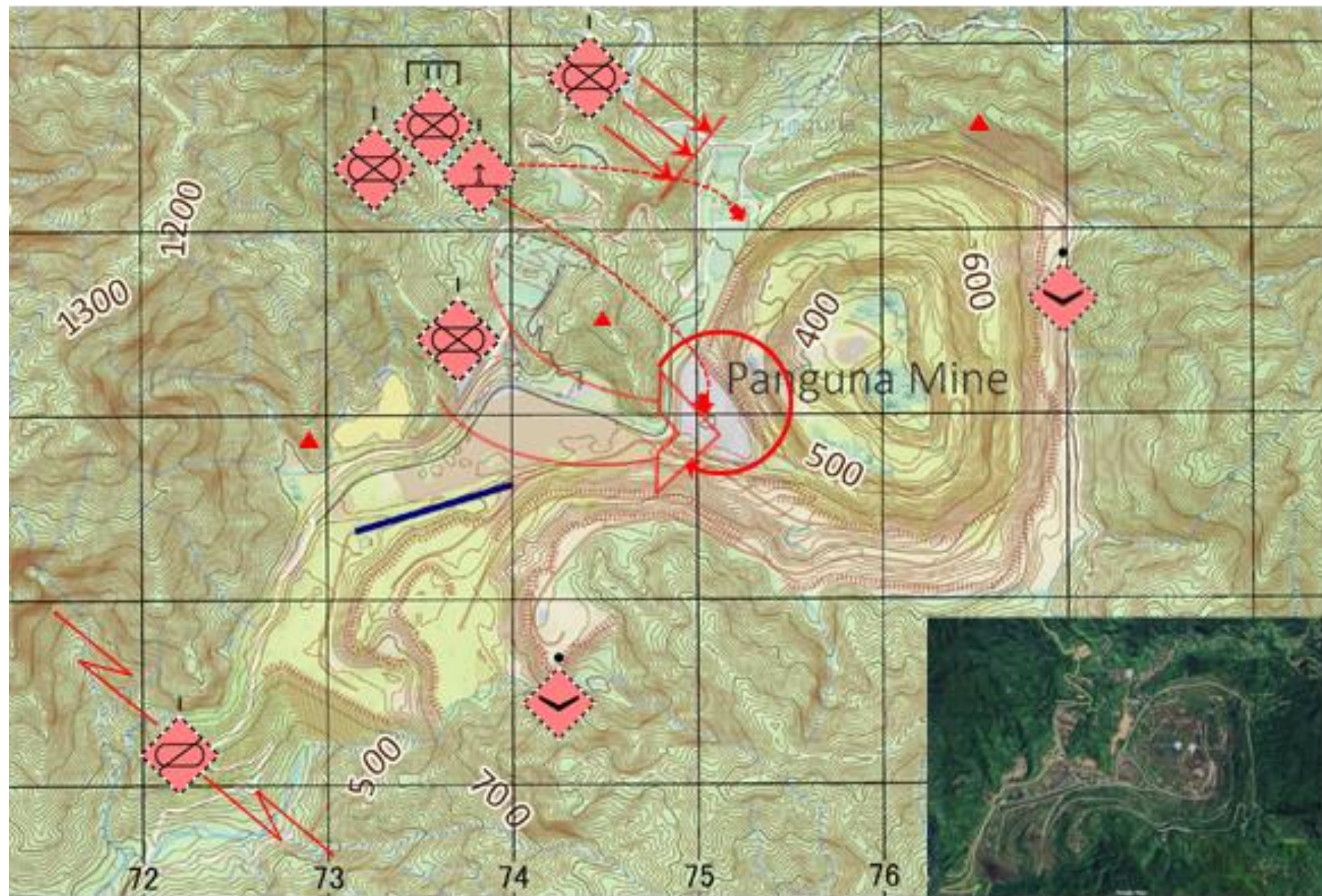
- 3 MECH COMPANY will conduct a clearance of the North Eastern sector of the PANGUNA MINE complex and hold, establishing hasty defensive positions.
- 2 MECH COMPANY will establish defensive positions in the Central region of the mine complex.
- 1 MECH COMPANY, MORTAR COY, and BN HQ will collapse and reposition within the PANGUNA mine complex.
- MECH RECON PLATOON will screen to the South East, providing EW for any enemy infiltration or C-ATK.
- UAS to maintain regular ISR patrols of the OBJ area and surrounds.

End-State.

The end state of this mission is:

1. PANGUNA MINE complex secured.
2. ISR and screening forces provide EW to the South, along the MSR.
3. The MECH BDE is able to continue clearance and seizure of PELABUKA ISLAND.

OFFICIAL / UNCLASSIFIED



OFFICIAL / UNCLASSIFIED

Relevant Training References

Olvanan Brigade level Tactics

[Olvanan Mechanised Brigade Task Group Tactics | Decisive Action Training Environment \(DATE\)](#)

Olvanan Jungle Warfare Tactics

[Olvanan Jungle Warfare Tactics at Combined Arms Brigade and Below | Decisive Action Training Environment \(DATE\)](#)

Further training resources are available on the Australian DATE website, accessed at date.army.gov.au

Detailed adversary information, including ORBATs, is available via United States Training and Transformation Command (T2 COM) at <https://odin.tradoc.army.mil/>