

**SCENARIO SPECIAL IDEA**

<b>Joint Area of Operations</b>	JOA - East (PAMI)
<b>General Idea</b>	OPERATION PACIFIC STORM
<b>Echelon Level</b>	BATTALION
<b>Unit Type</b>	MECHANISED INFANTRY
<b>Mission Type</b>	DEFENSIVE

**Scenario Design Comments**

In this scenario, the Olvanan People's Army (OPA) has conducted an expeditionary amphibious operation to seize the PULLER ISLANDS ISO their military objectives across the theatre.

As such, a Mechanised Brigade (MECH BDE) has successfully lodged on the Northern side of GUADALCANAL ISLAND, and PELABUKA ISLAND to the North West. Following their amphibious landing IVO HONIARA, the MECH BDE has rapidly secured surrounding Key Terrain (KT), IOT establish a foothold in the region and enable follow-on force flow.

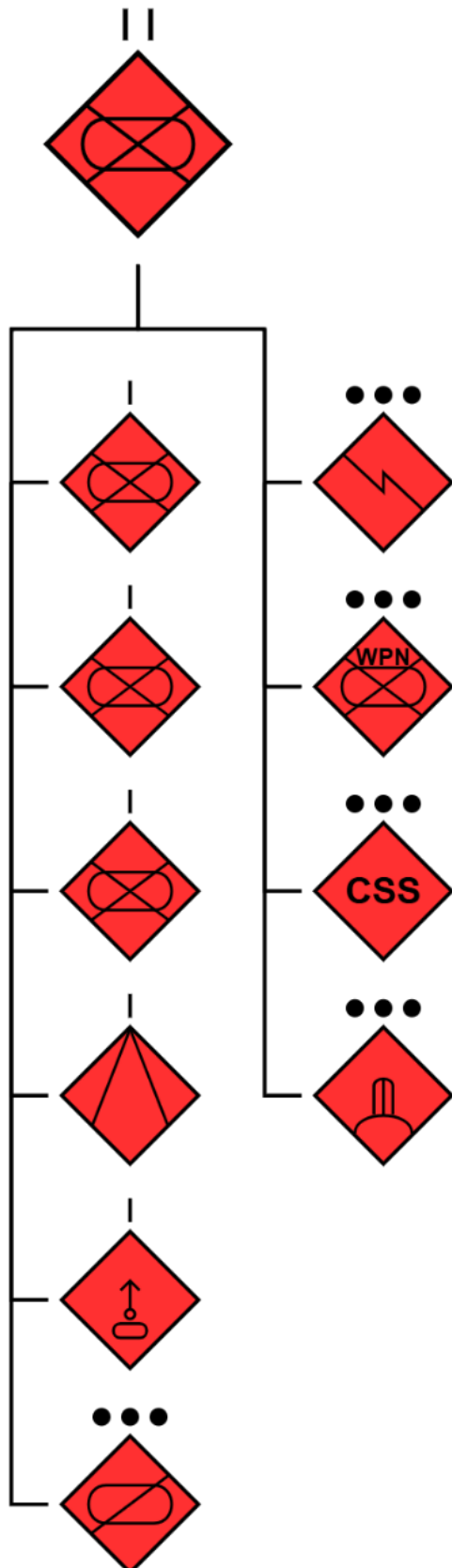
The OPA MECH BDE HQ is currently located at HONIARA, with Mechanised Battalions (MECH BNs) tasked to secure the SPOD at LEROY WHARF PORT, and another MECH BN tasked with securing the APOD at HENDERSON AIRFIELD, while remaining elements push out across the Area of Operations (AO).

Successful seizure of the APOD at HENDERSON AIRFIELD, and subsequent development of a hardened defensive position, will establish an air bridge to enable additional OPA elements to force project into the region.

Retention of the SPOD at LEROY WHARF PORT will assist the OPA in force sustainment, and act as a theatre forward logistics and staging hub.

## OPFOR suggested Order of Battle (ORBAT)

The suggested ORBAT for this scenario is the OPA Mechanised Battalion.



The MECH BN consists of:

1. Battalion Headquarters
2. Mechanised Infantry Companies (x3)
3. Anti-Tank Company
4. Self-propelled Mortar Company
5. Reconnaissance Platoon
6. Signals Platoon
7. Weapons Platoon
8. Combat Service Support (CSS) Platoon
9. Air Defence Platoon

The MECH BN is capable of conducting high-intensity offensive and defensive tactical actions, relatively independent of the MECH BDE.

The primary manoeuvre and firepower platform is the ZBL-08, an 8x8 Amphibious Infantry Fighting Vehicle (AIFV), capable of transporting between 7-11 dismounts depending on the configuration.

## **OPFOR Mission**

### **SITUATION**

Following the lodgement of the OPA MECH BDE on the Northern side of GUADALCANAL ISLAND, the BDE is required to seize and hold KT IVO HONIARA to enable follow on forces to flow into the theatre.

### **MISSION**

1 MECH BN is to secure HENDERSON AIRFIELD, HONIARA and establish a positional defence IOT secure the KT, establishing a foothold on GUADALCANAL ISLAND and enable OPA objectives in the AO.

#### **Phase 1 – Recon and support zone development**

- 1 MECH BN will conduct an ISR sweep of HENDERSON AIRFIELD and surrounds through its organic MECH RECON and UAS elements, with the MECH RECON focusing on screening the South East approaches.
- 1 MECH BN HQ and supporting elements will establish a support zone in the main terminal and administrative area of the airport, acting as an FUP for the BN's call signs prior to proceeding on task.

#### **Phase 2 – Depth and Battle zone development**

- 1 MECH COMPANY will occupy the aircraft hangars and servicing area, IOT develop the position and harden the area.
- SP MORTAR COMPANY and AIR DEFENCE PLATOON will co-locate to the urban area North of the airport, with SP MORTAR COMPANY BPT conduct indirect offensive fires, and the AD PLATOON establishing a localised air-defence ring against low-altitude aerial threats.
- RECON PLATOON and UAS elements will maintain persistent ISR coverage of the surrounding area.

#### **Phase 3 – Battle zone development**

- 2 and 3 MECH COMPANY will secure the Eastern runway perimeter, and develop local obstacles and defences, covering the Battle zone and Eastern approaches.

#### **Phase 4 – Disruption zone and Defensive procedure**

- 3 MECH COMPANY will conduct a fighting patrol to secure the industrial areas to the East of the airport.
- All MECH BATTALION subordinate elements will continue to conduct defensive routine, including localised patrolling, ISR, and position development and hardening.

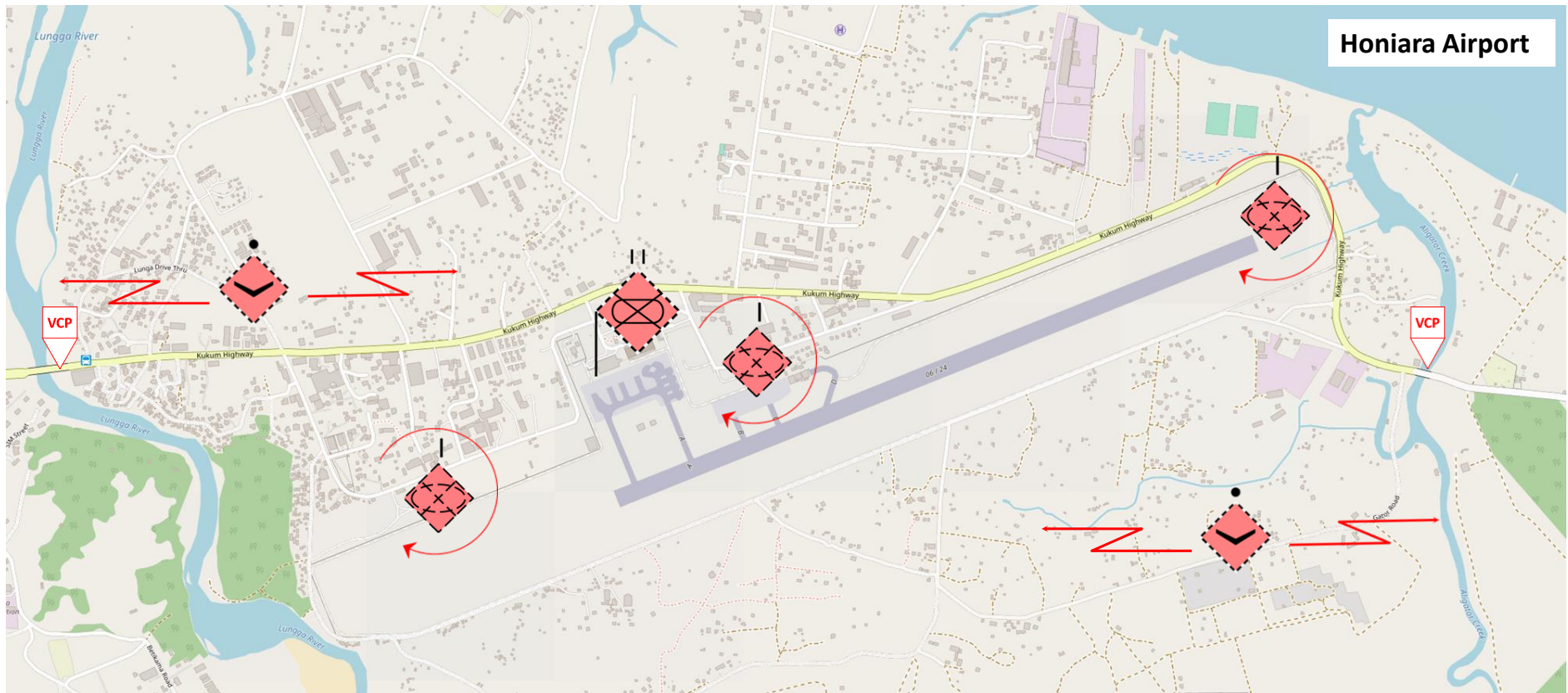
- 2 MECH COMPANY will split, and establish Vehicle Check Points (VCPs) on the Eastern and Western approaches/bridges along the MSR.
- Engagement Areas (EAs) are to be established to the South of the Airport.

**End-State.**

The desired end state of this mission is:

1. APOD at HENDERSON AIRFIELD secured, including ATC and terminal facilities.
2. Hardened defensive position is established at the APOD, able to resist local C-ATK.
3. ISR, VCPs, and local patrolling activities are regularly conducted to provide local security and Situational Awareness (SA).
4. APOD/Bridgehead at HENDERSON AIRFIELD secured to enable force-flow into the AO.

OFFICIAL / UNCLASSIFIED



OFFICIAL / UNCLASSIFIED

## Relevant Training References

### **Olvanan Brigade level Tactics**

[Olvanan Mechanised Brigade Task Group Tactics | Decisive Action Training Environment \(DATE\)](#)

### **Olvanan Jungle Warfare Tactics**

[Olvanan Jungle Warfare Tactics at Combined Arms Brigade and Below | Decisive Action Training Environment \(DATE\)](#)

Further training resources are available on the Australian DATE website, accessed at [date.army.gov.au](http://date.army.gov.au)

Detailed adversary information, including ORBATs, is available via United States Training and Transformation Command (T2 COM) at <https://odin.tradoc.army.mil/>