

SCENARIO SPECIAL IDEA

Joint Area of Operations	JOA - East (PAMI)
General Idea	OPERATION BRONZE ACHILLES (OBA)
Echelon Level	BATTALION
Unit Type	MARINE EXPEDITIONARY BATTALION
Mission Type	OFFENSIVE – AMPHIBIOUS LODGEMENT

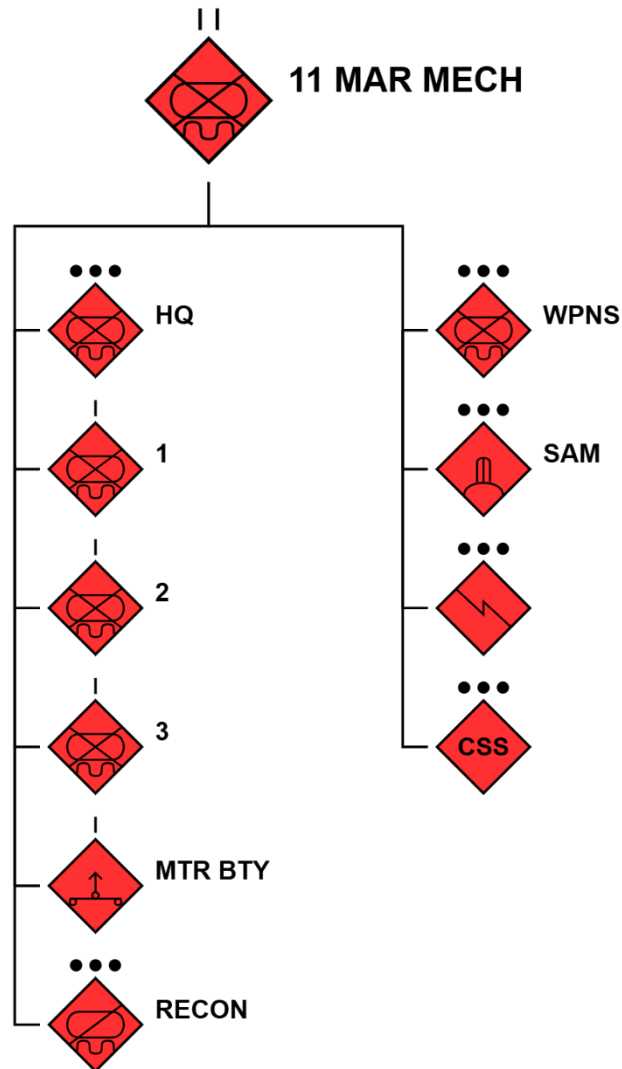
Scenario Design Comments

In this scenario, an Olvanan (OV) Marine Mechanised Battalion (MAR MECH BN) conducts an offensive amphibious landing at DAGUPAN, SOUTH TORBIA, IOT seize the beachhead and port-road exits and enable follow-on Brigade (BDE) elements to flow ashore and force project across the region.

Operation BRONZE ACHILLES (OBA) has been designed to enable individual training in a Joint Environment utilising DATE-Pacific. BRONZE ACHILLES sees Australia operating as part of a US-led multi-national force against a peer adversary (Olvana) fighting in South Torbia (ST). The Campaign Plan provides enough detail to enable exercise designers and instructors to develop specific scenarios to enable individual training.

OPFOR suggested Order of Battle (ORBAT)

The suggested ORBAT for this scenario is an Olvanan Marine Mechanised Battalion (OLV MAR MECH BN):



The MAR MECH BN comprises of:

- Marine Mechanised Company (x3)
- Self-propelled Mortar Battery
- Reconnaissance Platoon
- Weapons Platoon
- Surface to Air Missile (SAM) Platoon
- Signals Platoon
- Combat Service Support (CSS) Platoon

Holistically, the MAR MECH BN is constructed to be capable of conducting expeditionary amphibious operations, and is the primary combat and manoeuvre element in support of the parent Olvanan People's Navy Marine Corps (OPNMC) Marine Brigade (MAR BDE).

OPFOR Mission

SITUATION

Olvanan SHC has directed a BN AMPHIB ASLT IVO DAGUPAN, ST IOT seize the beachhead and port-road exits to enable follow-on forces in the region.

MISSION

11 MAR MECH BN is to conduct an amphibious assault on DAGUPAN BEACH from first light IVO AXIS COAST IOT seize the beachhead, secure beach exits and establish SPOD to receive follow-on forces and enable corps manoeuvre along the ST littoral area.

Phase 1 – Recon and Shaping

- RECON PL will confirm the presence of any surf-zone obstacles that may impede the BN's lodgement – if practical, reduction or marking of these obstacles is to occur.
- Safe lanes marked on the beachhead, RECON PL BPT guide the assault force onto the objective.
- ISR soak maintained over beachhead, and further in-land to provide Situational Awareness (SA) on any EN or CIVPOP movements within the AO.

Phase 2 – Amphibious Assault

- On order, once conditions are set, 1 and 2 MAR MECH COY will launch from Type 075 Landing Helicopter Dock (LHD) mounted in ZBD-05s and conduct an unopposed amphibious landing on pre-designated surf lanes.
- Once ashore, 1 MAR MECH COY will rapidly advance inland, bypassing any obstacles or CIVPOP to secure the APOD at LINGAYEN AIRPORT (OBJ ALPHA), ensuring the fuelling facilities are captured intact.
- 2 MAR MECH COY will follow and assume from 1 MAR MECH COY, pushing further inland clearing South to the BASING RIVER and establishing blocking forces on MSRs with HMG/AGL to cover likely enemy avenues of approach and interdict any potential C-ATK force.

Phase 3 – Build-up

- Once ashore, the MORTAR BATTERY will utilise the PLL-05 platforms to deliver smoke/HE on pre-registered Target Reference Points (TRPs) ISO Assault forces.
- 3 MAR MECH COY will conduct a FPOL with 2 MAR MECH COY, and establish blocking positions at key bridge chokepoints on MSRs. A SAM/HMG ring will be established along the Southern perimeter of the beachhead.

- 1, 2 and 3 MAR MECH COY + MORTAR BATTERY should BPT defeat any potential EN C-ATK.

Phase 4 – Expansion and consolidation

- Assault elements will continue advance and clearance, halting at the Limit of Exploitation (LOE) on the banks of the BASING RIVER.
- An inner and outer cordon will be established, with direct-fire and SAM assets.
- Helicopter Landing Site (HLS) and Logistics node (LOG Node) will be established at APOD AT LINGAYEN AIRPORT (OBJ Alpha).
- MAR MECH BN will BPT receive BDE follow-on forces to conduct a breakout into the AO.

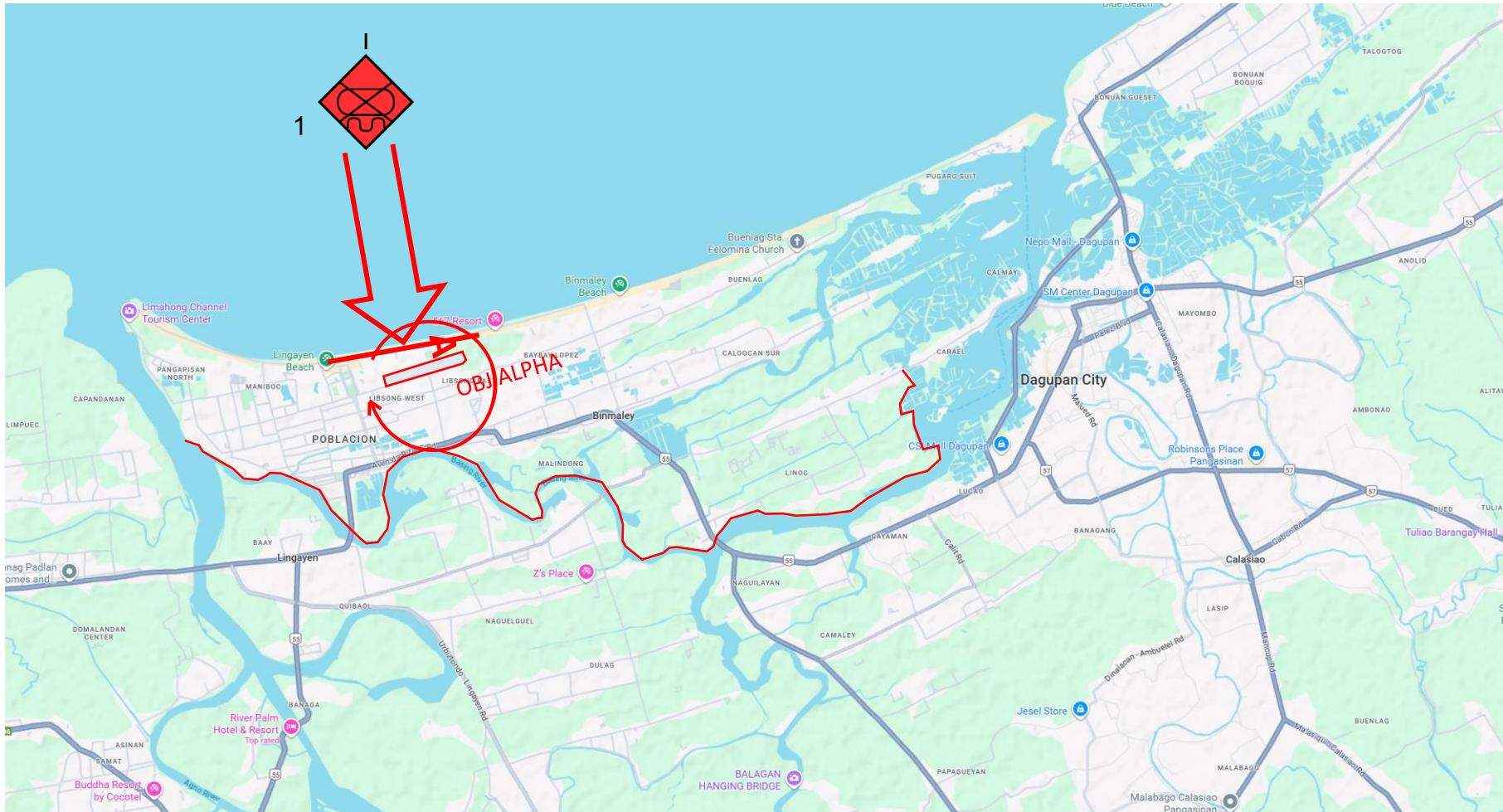
End-State.

DAGUPAN beachhead secured, bridges and port approaches blocked, APOD established, lodgement open for sustained operations in the ST littoral region.

OFFICIAL / UNCLASSIFIED

AMPHIB LODGEMENT

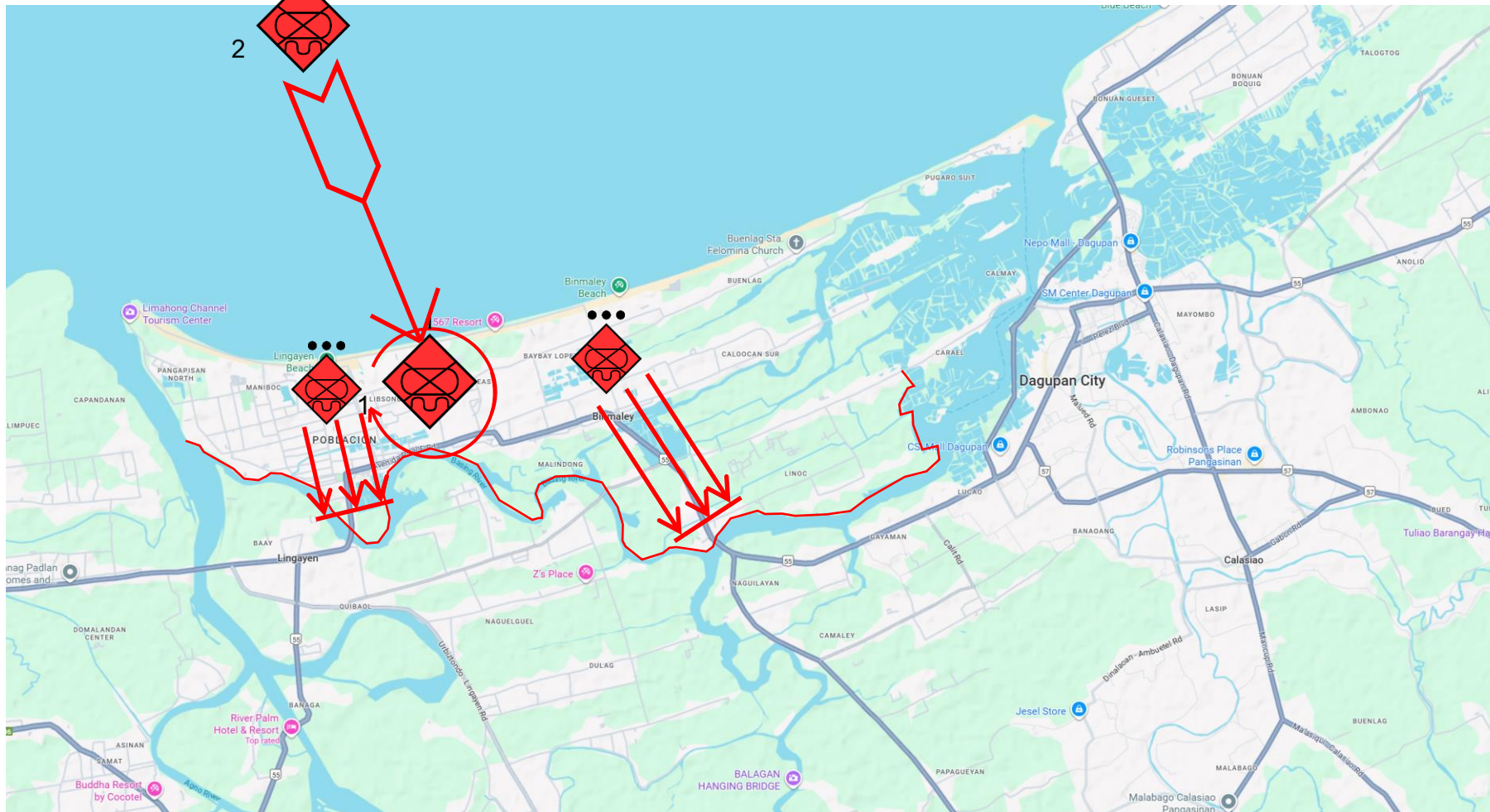
Secure APOD (OBJ ALPHA)



OFFICIAL / UNCLASSIFIED

OFFICIAL / UNCLASSIFIED

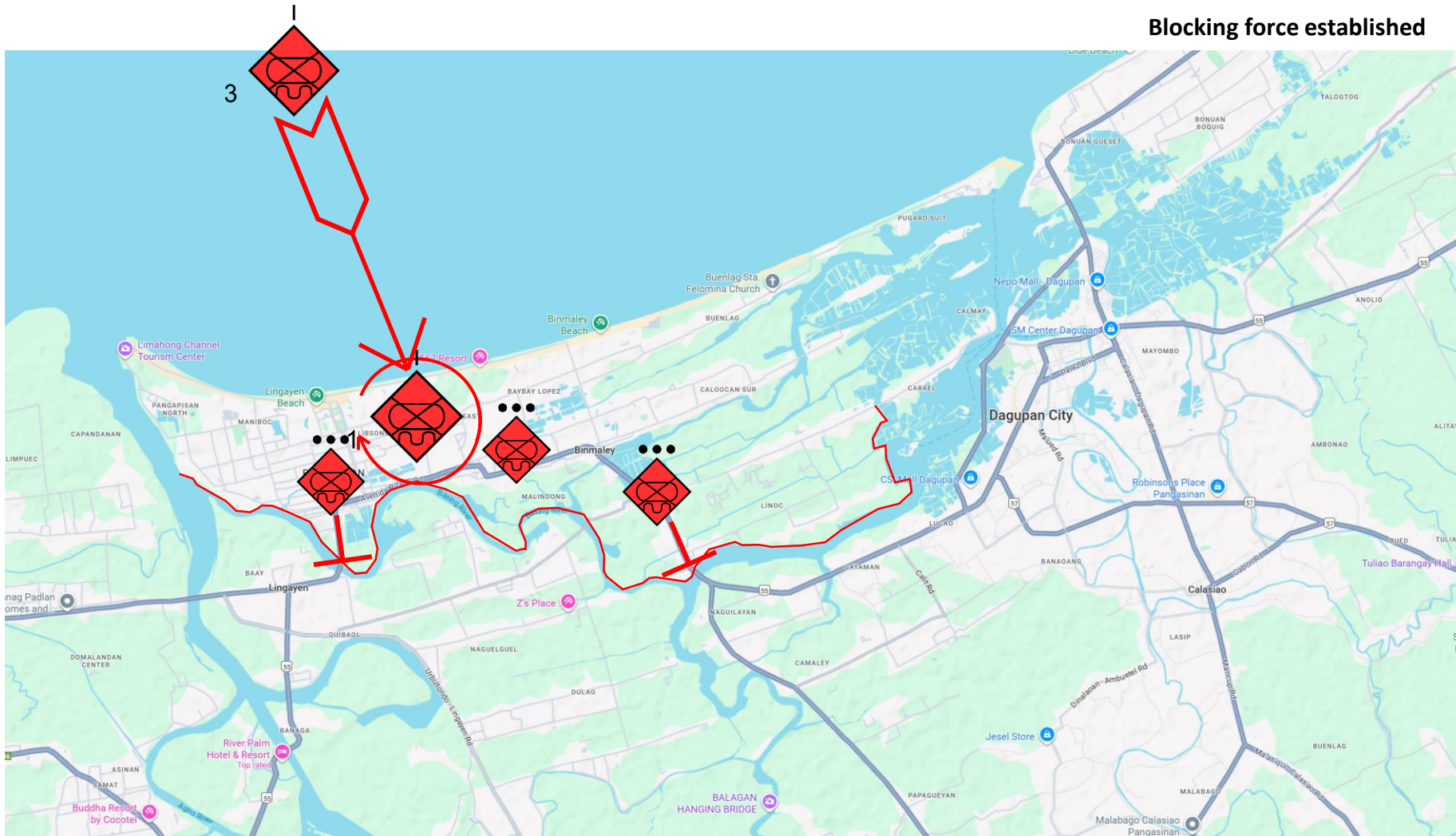
MECH MAR PLs clear towards chokepoints



OFFICIAL / UNCLASSIFIED

3 COY LANDS

Blocking force established

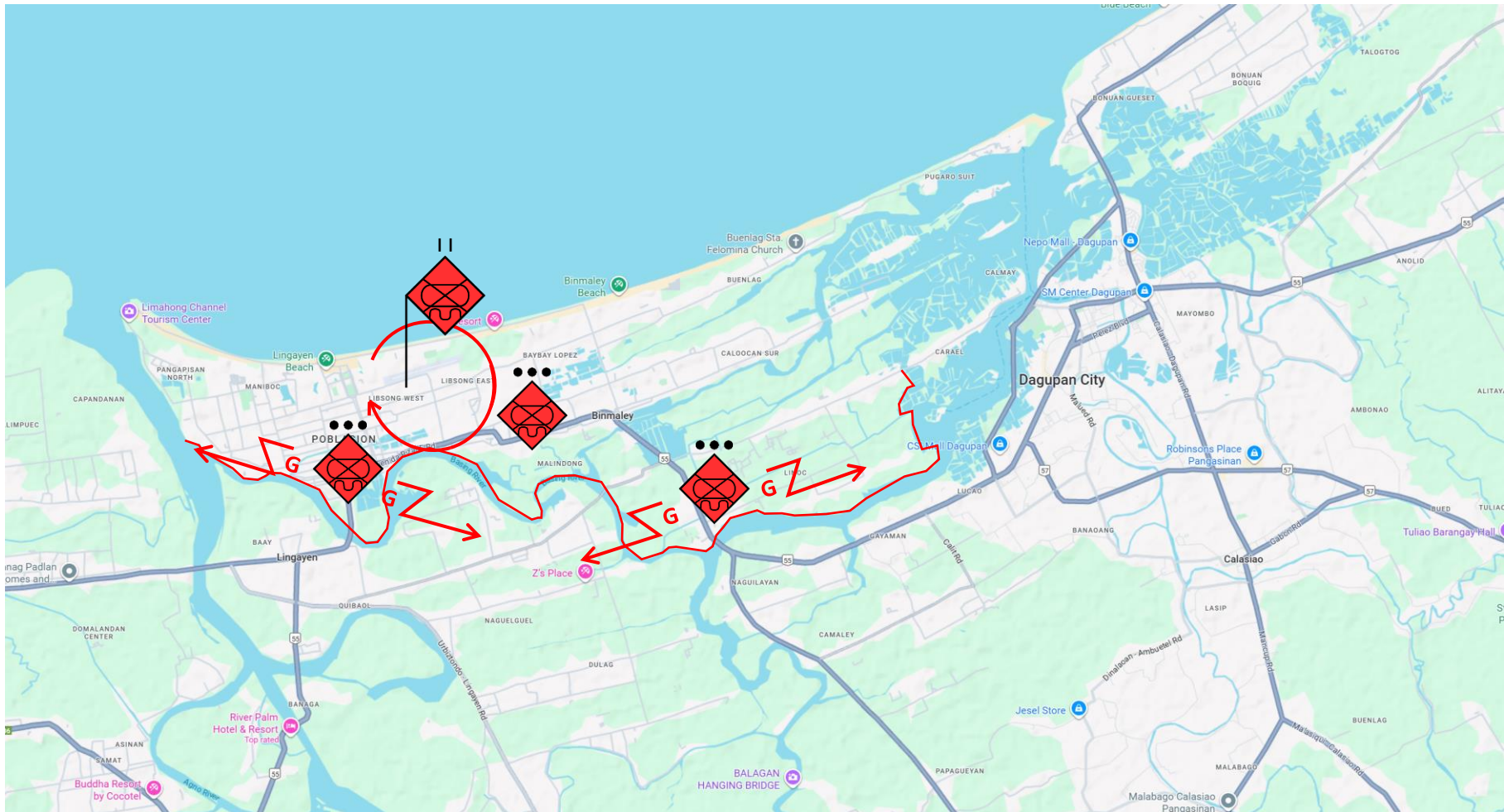


OFFICIAL / UNCLASSIFIED

OFFICIAL / UNCLASSIFIED

CONDITIONS SET

BN HQ established at APOD, Beachhead established, Outer-cordon set, BDE follow-on forces incoming



OFFICIAL / UNCLASSIFIED

Relevant Training References

Olvanan Brigade level Tactics

[Olvanan Mechanised Brigade Task Group Tactics | Decisive Action Training Environment \(DATE\)](#)

Olvanan Jungle Warfare Tactics

[Olvanan Jungle Warfare Tactics at Combined Arms Brigade and Below | Decisive Action Training Environment \(DATE\)](#)

Further training resources are available on the Australian DATE website, accessed at date.army.gov.au

Detailed adversary information, including ORBATs, is available via United States Training and Transformation Command (T2 COM) at <https://odin.tradoc.army.mil/>