

SCENARIO SPECIAL IDEA

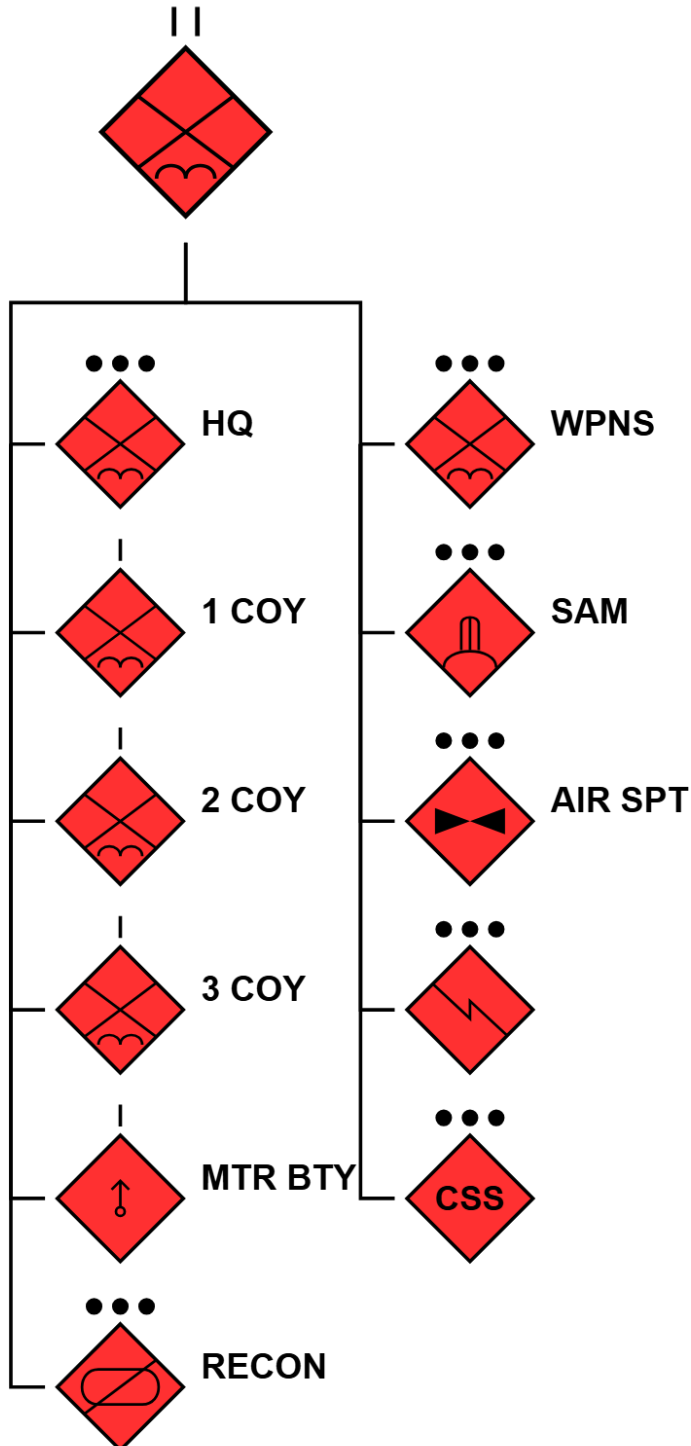
Joint Area of Operations	JOA - East (PAMI)
General Idea	OPERATION PACIFIC STORM
Echelon Level	BATTALION
Unit Type	AIRBORNE
Mission Type	OFFENSIVE – AIR MOBILE SEIZURE

Scenario Design Comments

In this scenario, an enemy air-mobile lodgement is directed against MANUS ISLAND to seize MOMOTE AIRFIELD and the LOBRUM approaches IOT open an air-land/sea lodgement enabling follow-on Olvanan forces to support operations across VOLCANI TURA and THE PULLER ISLANDS.

OPFOR suggested Order of Battle (ORBAT)

The suggested ORBAT for this scenario is an Airborne Battalion:



The ABN BN is a rapidly deployable manoeuvre force designed to conduct vertical envelopment, air assault, and forced-entry operations in support of broader OPA objectives.

The BN is optimised for short-duration, high-intensity combat operations following air insertion, with an emphasis on speed, surprise and seizure of KT.

The BN consists of:

- BN HQ
- ABN INF COY (x3)
- MORTAR BTY
- RECON PL
- WPNS PN
- SAM PL
- AIR SPT PL
- SIG PL
- CSS PL

While limited in protection and sustainment, the BNs integration of OS, AD and RECON enables it to remain combat effective in austere and contested environments.

OPFOR Mission

SITUATION

A COY sized element from the Olvanan 741 ABN BDE will conduct a scheduled flight landing on MANUS IS, VOLCANU TURA in an OPA Y-20 transport aircraft IOT seize MOMOTE AIRPORT APOD decisive terrain and set the conditions for follow-on forces to consolidate and control the LOMBRUM approaches IVO the BISMARCK SEA.

MISSION

1 COY, 1 BN, 741 ABN BDE (OLVANA) is to conduct air-mobile operations to SEIZE MOMOTE AIRFIELD and SECURE LOMBRUM APPROACHES on MANUS ISLAND IOT establish an air/land sea lodgement to enable follow-on 1 BN force elements to seize MANUS IS.

Phase 1 – Cover and Positioning

- Y-20 lands under declared flight plan.
- Offload “technical team/consignments”.
- Marshalling positions pre-designated.
- 1 COY remain inside ACFT covertly.

Phase 2 – Seizure

- At last light, 1 COY disembarks Y-20 to conduct rapid seizure of nodes: ATC, fuel, thresholds, gates.
- Inner and Outer security perimeter established.
- GPMG/AGL sited for runway and MSR denial.
- MANPADs ring established.

Phase 3 – Air-Land Build-up

- Remaining 1 BN/741 ABN elements air-land onto hardstands and taxiways.
- 82mm mortars in action condition.
- WPNS PL establish arcs and Engagement Areas.
- BN Aid post established at MOMOTE AFLD.

Phase 4 –

- COYs CLEAR west to port-road chokepoints along MSRs.

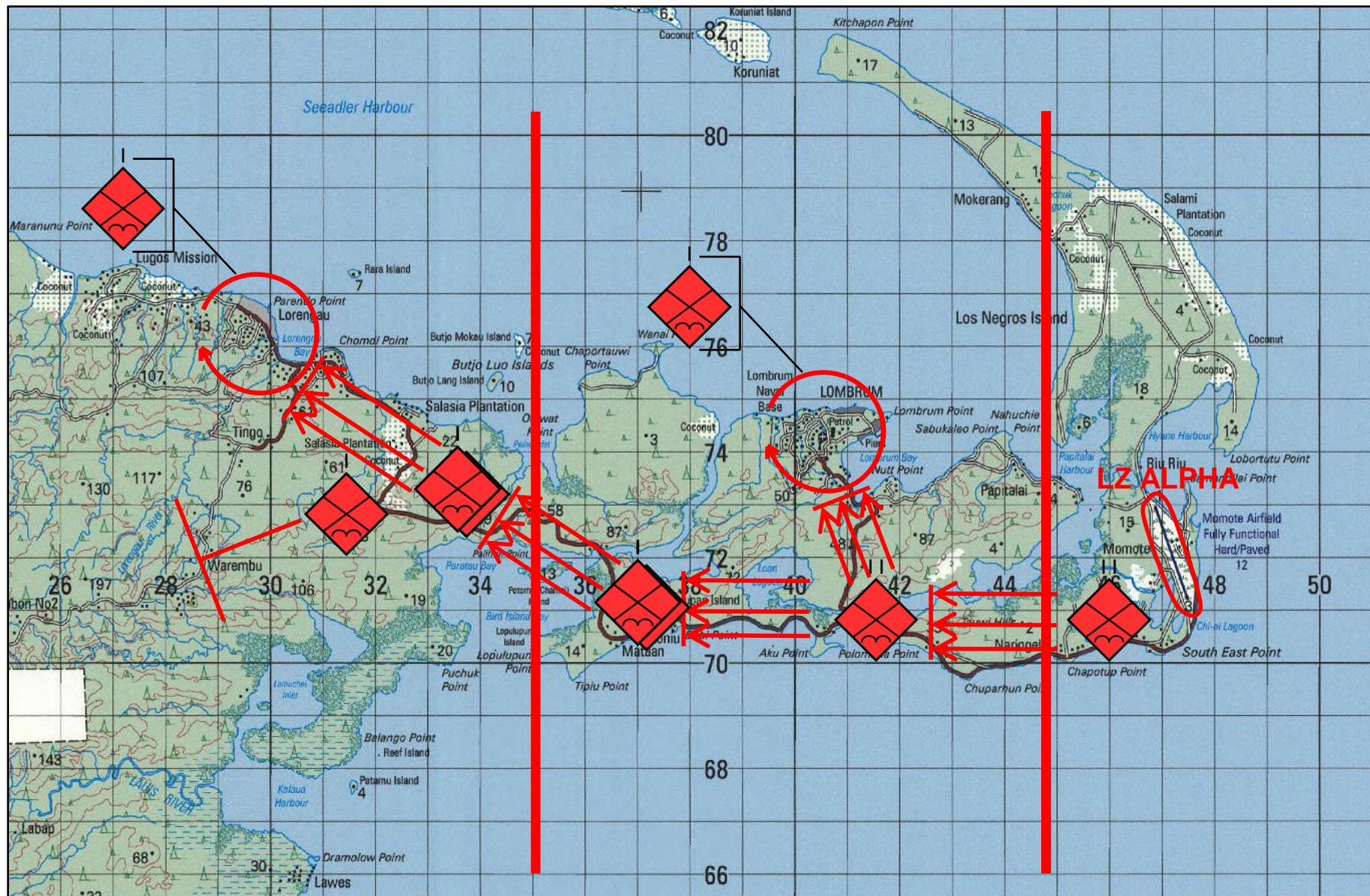
- NEUTRALISE any C-ATK.
- DEGRADE VTDF capability across MANUS IS.
- SECURE LORENGAU PORT for supplies.

End-State.

The successful end state of this mission is:

1. MOMOTE AFLD secured.
2. LOMBRUM approaches controlled.
3. APOD and SPOD established for follow-on operations into VOLCANI TURA and the PULLER ISLANDS.

OFFICIAL / UNCLASSIFIED



OFFICIAL / UNCLASSIFIED

Relevant Training References

Further training resources are available on the Australian DATE website, accessed at date.army.gov.au

Detailed adversary information, including ORBATs, is available via United States Training and Transformation Command (T2 COM) at <https://odin.tradoc.army.mil/>