

OFFICIAL

OPA Volcani Tura - General Idea

Background - Situation

The escalation of regional tensions with Olvanan has heightened, and Olvana has conducted a rapid deployment and occupation of Rabaul on the north of New Britain Island in Volcani Tura.

Olvana had been increasing its' presence in the region through infrastructure development and resource extraction activities with limited military cooperation agreements to assist in regional security. As conflict broke out between Khorathidin and Bagansait, Olvana aligned with Bagansait and rapidly moved to reinforce its' strategic interests in the region.

Olvana has deployed A2AD assets onto Mischief Reef, Bataraza Airfield, Jolo Airfield and Helen Reef. These A2AD assets were secretly hidden in place prior to the start of conflict and likely transported through standard commercial shipping and airfreight. The establishment of these A2AD nodes in key areas along the South-Western Pacific has effectively constricted all maritime and air traffic in the region. Olvana seeks to proliferate additional A2AD nodes further across the Pacific region.

Olvana conducted a rapid occupation of Rabaul in Volcani Tura landing a Olvanan Mechanised Marine Brigade (MECH MAR BDE) in conjunction with the activation of its' A2AD assets through the Eastern Island chains, and is assessed to be setting the conditions for further expansion of their A2AD network into the region. The MECH MAR BDE secured Key Terrain IVO Rabaul, and establish a sustained lodgement enabling follow-on forces to project power across the Bismarck Sea and into the wider Puller Islands area.

Volcani Tura does not maintain military forces IVO Rabaul on the island New Britain, with security provided by local police force elements. Due to the significant overmatch by Olvanan forces, the local security forces IVO of Rabaul withdrawn from the region and moving to reposition in the south awaiting reinforcement.

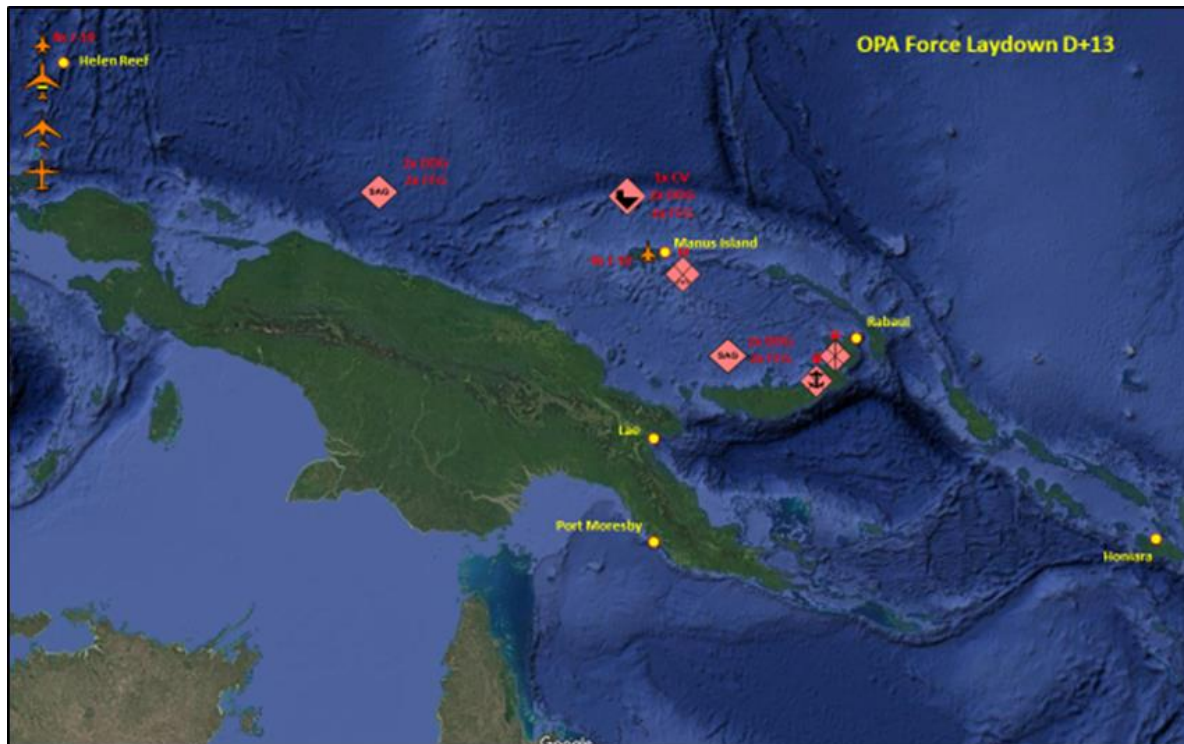


Figure 1. OPA Forces in Bismarck Sea

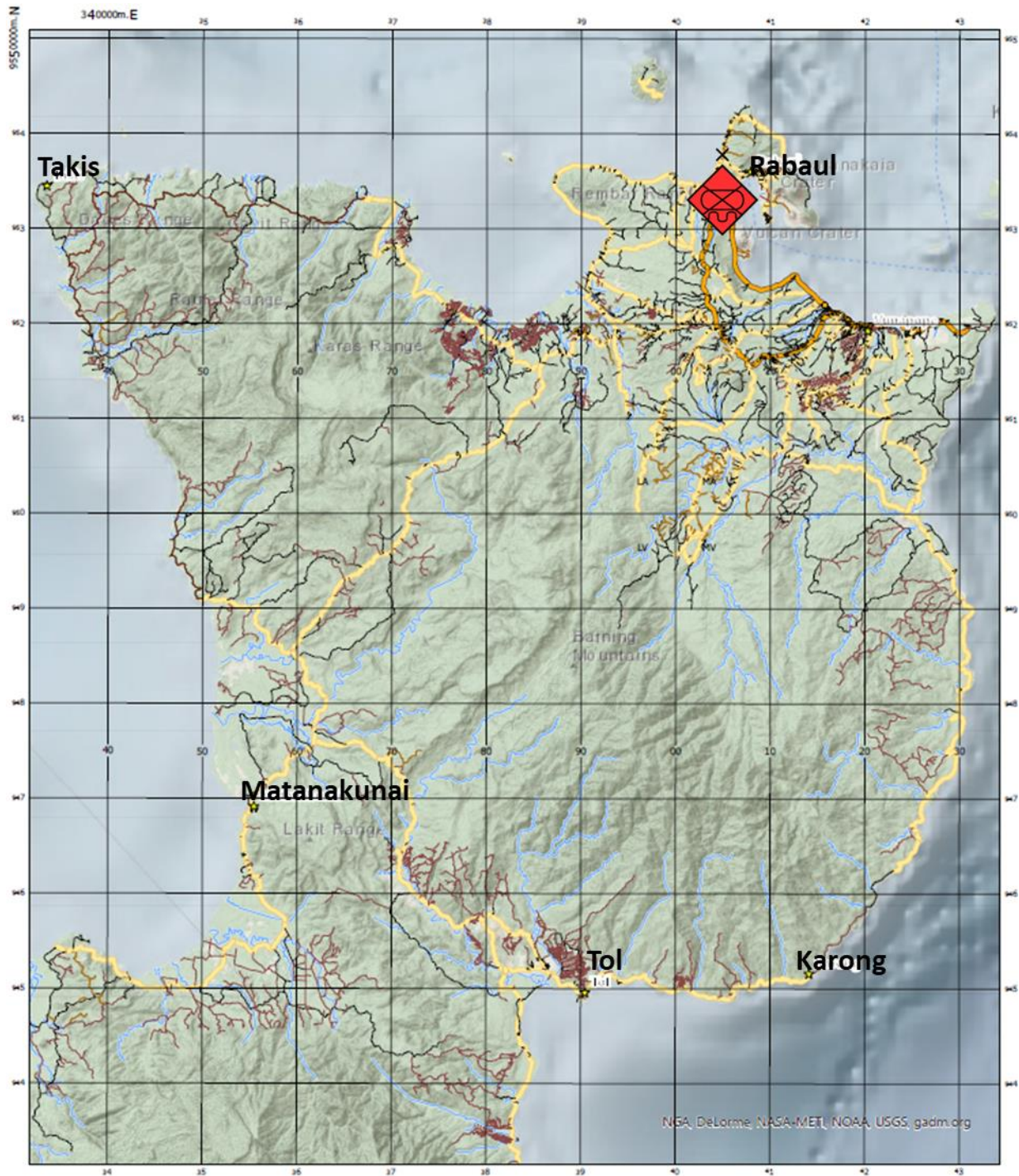


Figure 2. North East New Britain AO

Area of Operations (AO). The AO encompasses the entire North East of New Britain Island in Volcani Tura, including the surrounding waters out to 12NM. The largest population centre in the region is Rabaul on the North Eastern coast, with other populous areas being Karang in the South East, Matanakunai in the South West, Taki in the North West and Tol on the Southern Coast. The AO is serviced by a major port and Airport in Rabaul. There are additional port facilities in the South and South West IVO Matanakunai and Toi, with deep water port access typically use for logging exports. The primary Airport of the AO is east of Rabaul IVO of Tokua with a secondary unsealed runway at Toi in the south. The AO is divided by a large mountainous area that runs through the centre restricting

movement through the island. The AO has very restricted terrain with dense jungles and mountains restricting heavy vehicle movement to the limited MSR that cross the island. The Area of Interest (AI) includes the entire nation of Volcani Tura and the surrounding waters out to 12NM.

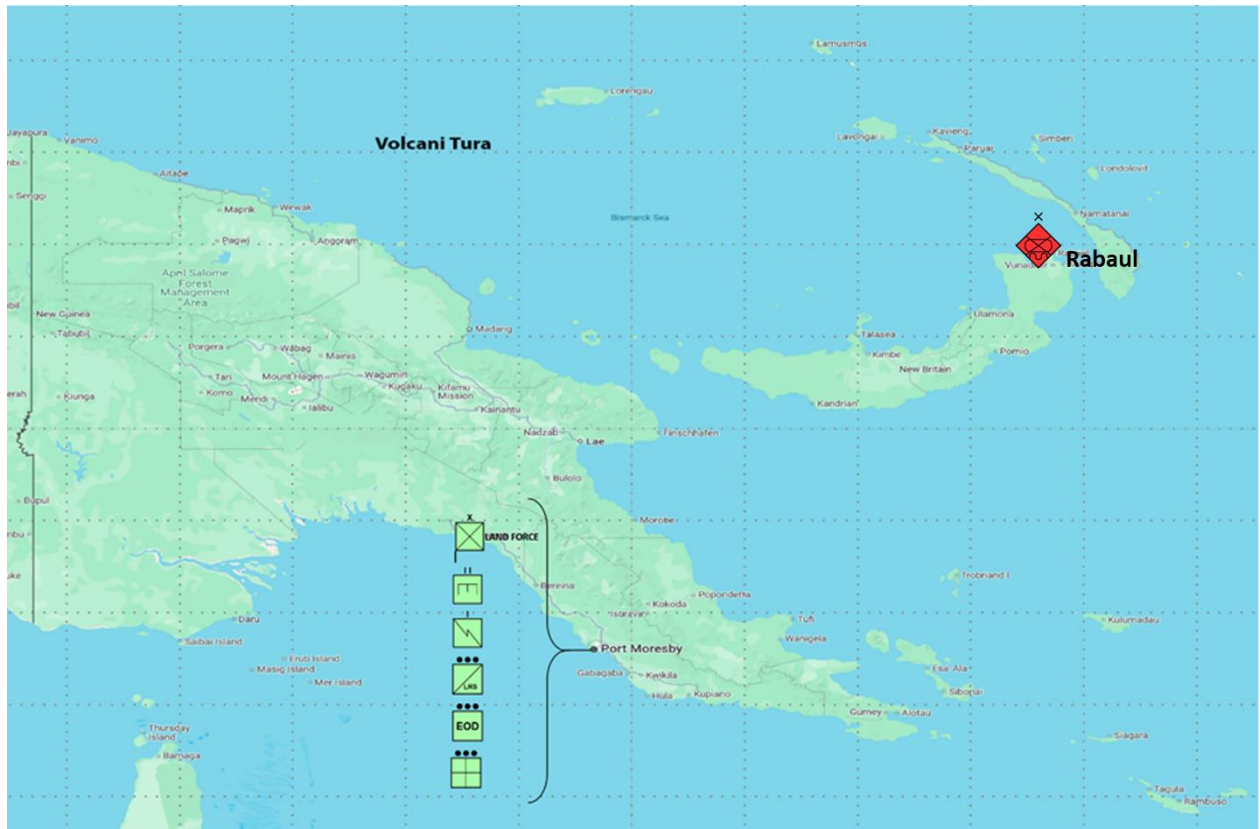


Figure 3. Volcani Tura AI

Volcani Tura Response

Volcani Tura and the New Britain region have been caught unprepared and with a limited security forces suffering significant overmatch from the Olvanan lodgement. The Volcani Tura Defence force (VTDF) are mobilising to reinforce New Britain and provide support to the national police force in the region. The VTDF consist of, a headquarters, two motorized infantry battalions, A field artillery battalion, A combat engineer company detached and a signals platoon, based out of the capital in Port Moresby. The 1st Royal Volcani Tura Regiment is responsible for land operations covering the mainland of Vulcani Tura. Its role is to protect against external aggression, provide for internal security in support of the police, and carry out civic action and relief operations when required. The infantry battalions are also capable of constructing roads, bridges, and other infrastructure in remote regions.

Volcani Tura have condemned the Olvanan aggression and occupation of Rabaul and called for assistance from its' regional and international partners. A UN resolution has been put forward condemning the Olvanan offensive action in Rabaul, and a coalition have sanctioned Olvanan and committed to providing military aid. A small force of liaison advisors from the coalition were already in place IVO the Volcani Tura capital of Port Moresby, assisting to facilitate the reponse effort and reinforcement of New Britain.